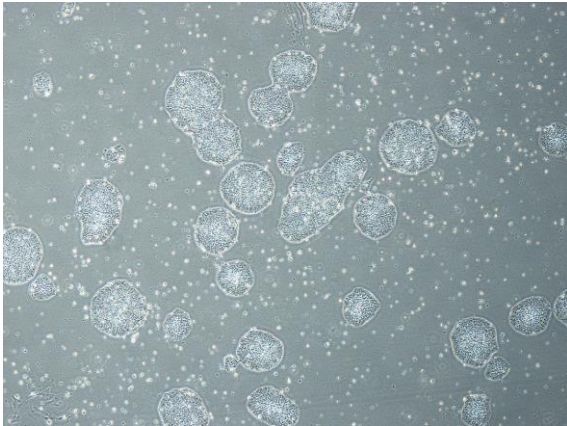
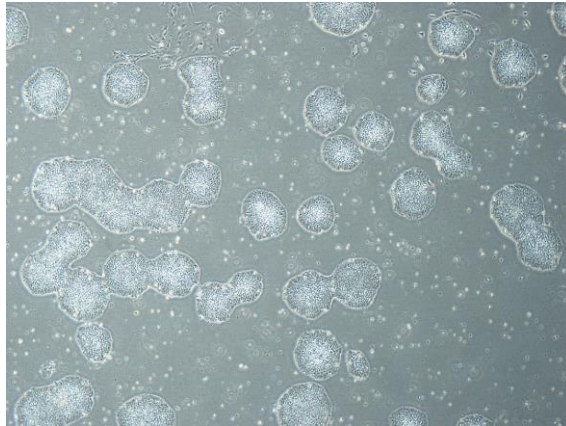


## 【 CiRA-j-1490 】 Morphology of iPSC colonies

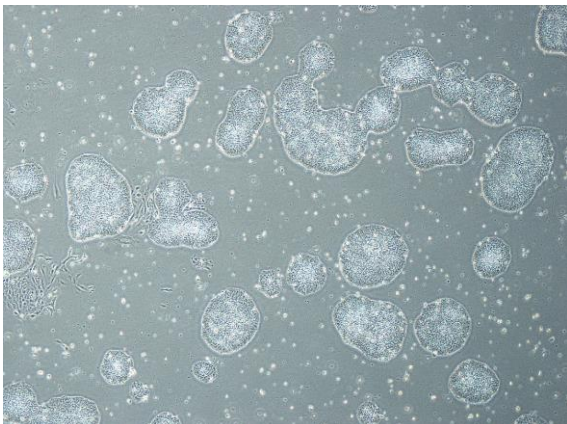
CiRA-j-1490-A: passage-3



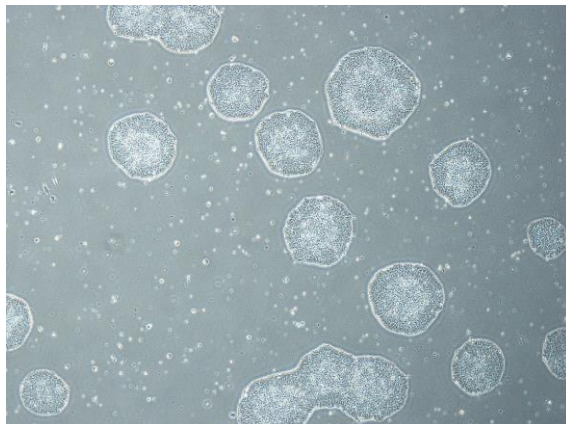
CiRA-j-1490-B: passage-3



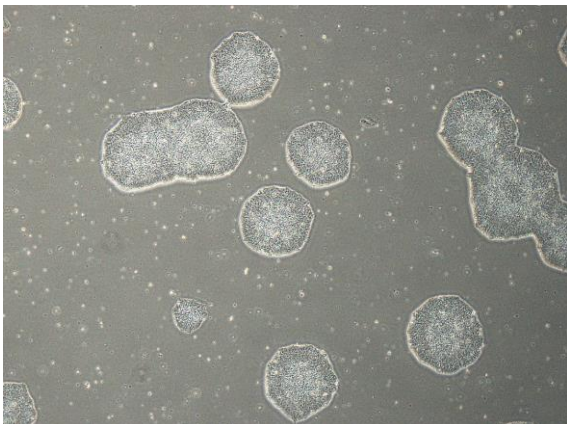
CiRA-j-1490-C: passage-3



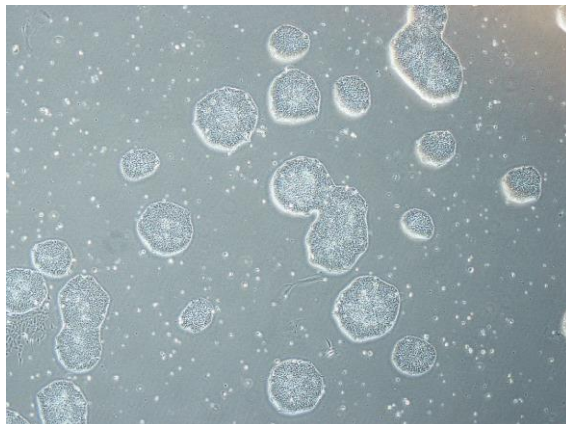
CiRA-j-1490-D: passage-3



CiRA-j-1490-E: passage-3



CiRA-j-1490-F: passage-3



( All images were captured at 4x magnification )